

iPlume™

Inline Induced Flow Laboratory Exhaust System



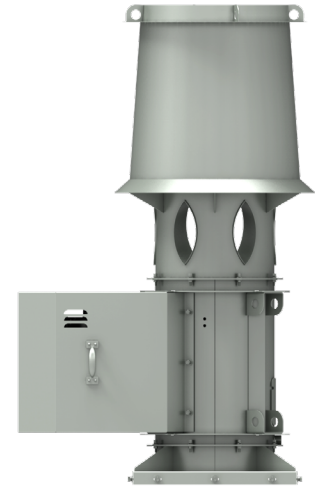
The iPlume is an induced flow laboratory exhaust system utilizing a mixed flow wheel that allows contaminated effluent to be discharged from the building in a safe and efficient manner while maintaining a clean roofline.

Features

- Mixed flow airfoil wheel
- Direct drive arrangement 4 or belt drive arrangement 9
- Induced flow windband
- Configurable in multiple fan arrangements with redundancy
- Isolation damper on slide out tray for ease of maintenance
- 125 mph wind load rating without guy wires
- Entrainment ratios up to 350%

Accessories

- Lab fan controller
- Bottom or side intake mixing plenum box
- Single wall or double wall insulated with stainless liner mixing plenum box
- Stainless steel airstream hardware
- Stainless steel shaft
- Spark resistant construction
- Extended lube lines
- Fan and plenum box drains
- Aluminum, coated aluminum or stainless steel dampers
- Jib crane
- Lifting lugs
- Access doors in fan and mixing plenum
- Phenolic coating with UV topcoat



Dimensions

DIMENSIONAL & WEIGHT DATA										
MODEL	A	B	D	E	F	G	H	J	MAX MTR FRAME SIZE	WEIGHT*(LBS)
122	111 13/16	36 5/16	52 9/16	42	28 7/8	17 7/8	30 1/16	29 7/16	184T	872
135	118 3/4	39 5/16	55 9/16	42	31 9/16	19 3/4	33 1/8	29 7/8	215T	987
150	126 3/4	45 5/16	61 9/16	42	34 5/8	21 15/16	36 13/16	33 3/8	256T	1154
165	127 5/8	46 5/16	62 9/16	42	37 3/4	23 7/16	40 5/8	34 1/8	256T	1213
182	142 7/16	53 5/16	71 11/16	48	41 1/4	25 13/16	44 15/16	35 3/8	256T	1518
200	150 13/16	57 5/16	75 3/4	48	44 15/16	28 3/8	49 3/16	36 5/8	256T	1592
222	161 15/16	61 5/16	79 3/4	48	49 7/16	31 7/16	54 3/4	40	286T	1846
245	157 1/4	62 5/16	80 3/4	48	54 3/16	34 11/16	53 9/16	41 9/16	286T	1939
270	167 15/16	65 5/16	83 3/4	48	59 5/16	38 3/16	59 1/16	45 1/2	326T	2195
300	186 7/8	71 5/16	91 7/8	54	65 1/2	42 7/16	65 9/16	49 7/16	365T	2714
330	200 1/16	78 1/4	98 13/16	54	71 3/4	46 5/8	72 1/8	51 9/16	365T	3251
365	197 1/2	81 1/4	103 15/16	60	78 7/8	51 5/8	67 3/8	56 1/2	405T	3908
402	210 7/8	86 1/4	108 15/16	60	86 1/2	56 3/4	74 5/16	59 1/8	405T	4372
445	250 15/16	92 1/4	123 5/16	84	95 3/8	62 3/4	82 1/8	65 3/8	444T	5492

All dimensions are in inches.

A = Overall system height (without curb)

B = Width of Plenum (inside)

D = Overall width of the system

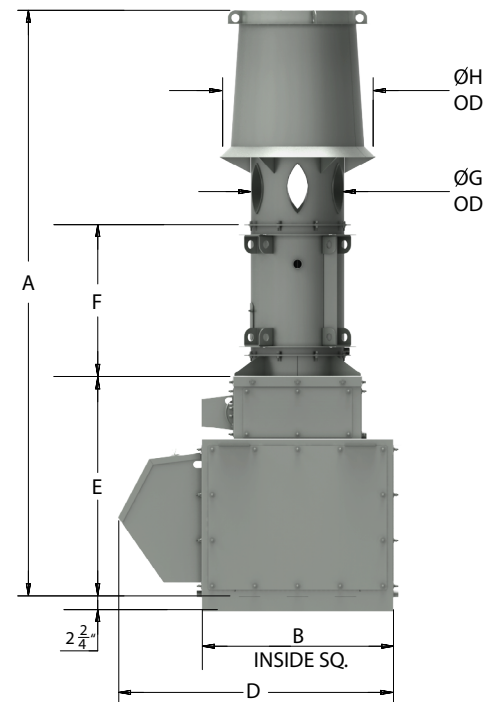
E = Height of plenum

F = Height of fan

G = Dia. of nozzle

H = Dia. of windband collar

J = Max. weather cover



PENN BARRY™